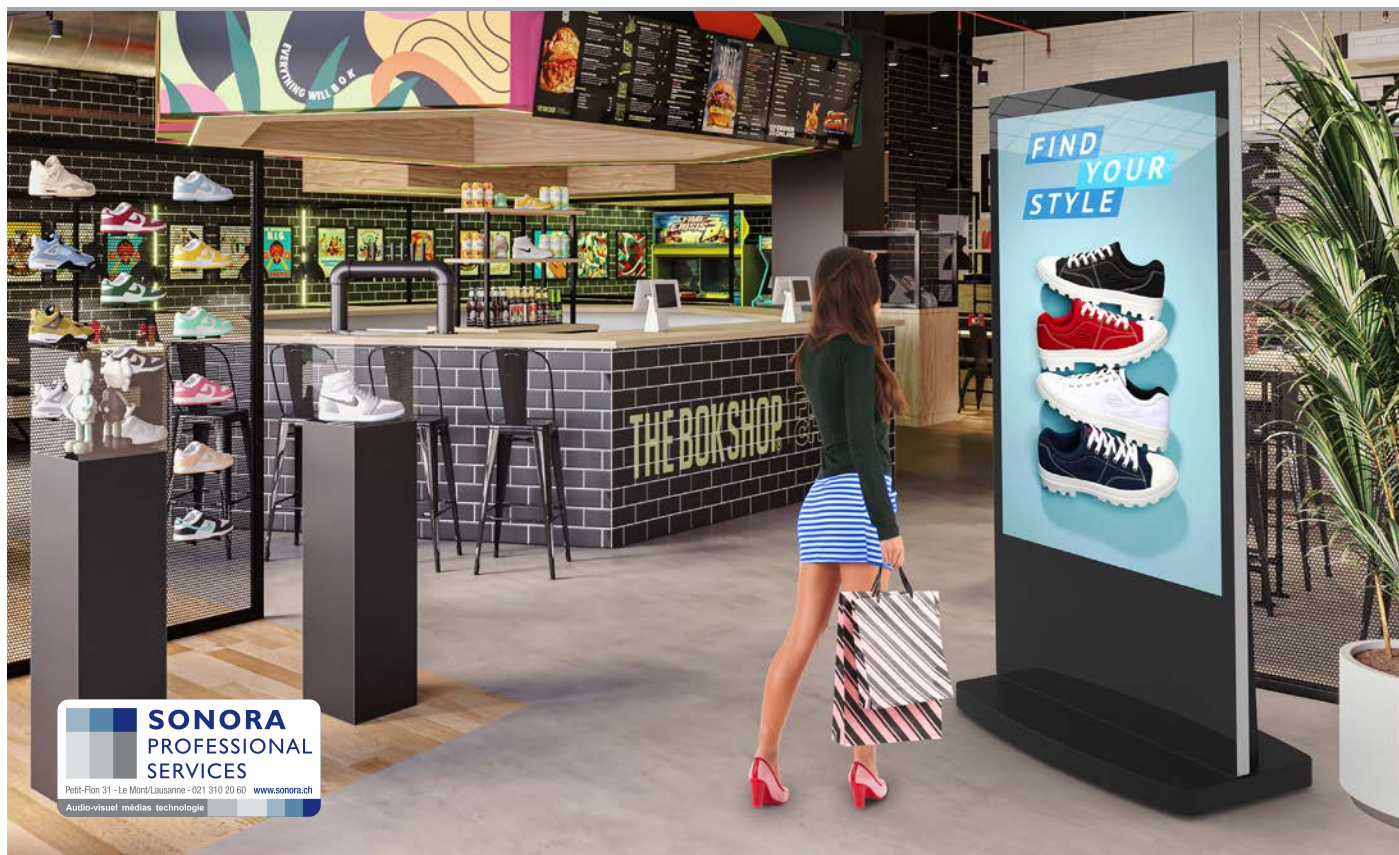


65" 4K Android Freestanding Digital Posters



Show-stopping digital advertising totems with giant tablet styling

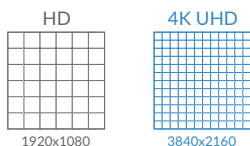
Commanding Giant Monolith

The thicker robust enclosure, tempered glass face, rounded corners, aluminium surround and classic piano black colour give an attractive colossal tablet-like aesthetic. They also protect the internal components from potential damage in public spaces.



Remarkable 4K Display

With four times the resolution of Full HD you can achieve a truly immersive experience with an incredible image quality. 4K content can be displayed via USB plug and play, via our CMS My Signage Portal, third party Android software or by using third-party devices via the HDMI input, giving you ultimate flexibility.



24/7 Commercial Use



Internal Locker/AV Inputs



450cd/m² IPS Panel



Integrated Castors



Free Scheduling Software



Low Power Consumption



3-Year Warranty



Lifetime Tech Support

Other Features

Integrated 4K Android Media Player

The built-in Android media player allows you to easily run and update on-screen content via a website, our own online CMS platform or any other compatible third-party software.



Internal Locker

Having a lockable compartment in the rear of the display with space to fit a small PC or media player means running the screen from an external source is easy – simply use the 4K HDMI or VGA and 5mm audio inputs. This device can be powered from inside the locker with no need for additional power cables.



450cd/m² IPS Panel

Commercial grade IPS technology ensures incredible image quality and colour depth with no fall-off in colour accuracy, as well as achieving ultimate lifelike colour from an ultra-wide viewing angle in portrait orientation.



Easy Manoeuvrability

Thanks to the integrated castors and recessed rear handles, these displays offer a portable solution that can be easily moved around. For more permanent installations, the retractable feet can be used to keep the display in place.



24/7 Commercial Grade

Designed for continuous use in public spaces, these displays utilise commercial grade LCD panels, LED backlights and internal components. This means they can run 24/7 for over 70,000 hours. To avoid tampering, they also have no external buttons or controls.



Built-In Speakers

Take your digital signage solution to the next level by adding an audio element using the two integrated slimline speakers.



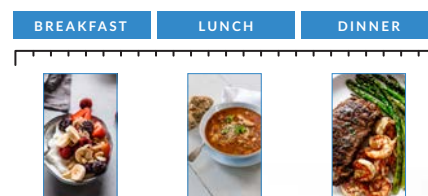
Power Timer

The eco-friendly power timer allows you to assign daily or weekly on and off times for your screen meaning that it is only in use when it needs to be; improving your environmental efficiency.



Free Scheduling Software

These displays come with free scheduling software for displaying different content at different times of the day. If you prefer to keep it simple you can update the screen directly without using the software.



Key Features

IPS

450CD/M² IPS PANEL

4K

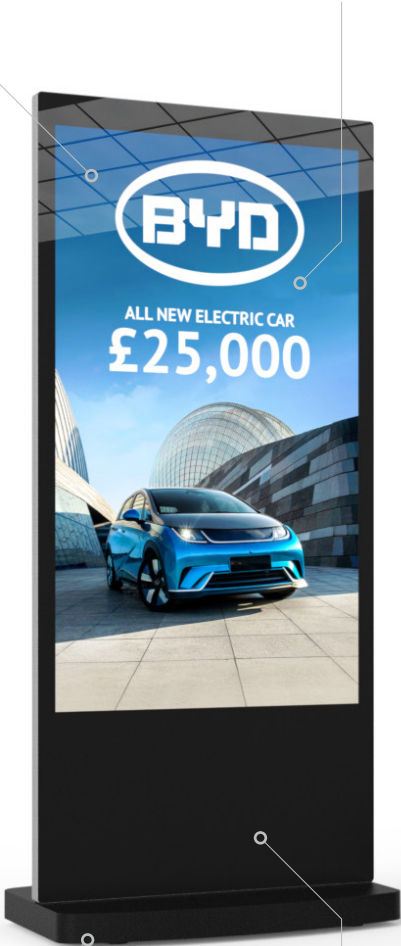
4K RESOLUTION



EDGE-TO-EDGE TEMPERED GLASS



SPACE FOR LOGO



INTEGRATED CASTORS

USB PLUG AND PLAY

24/7 COMMERCIAL USE

OPTIONAL NETWORK UPGRADE

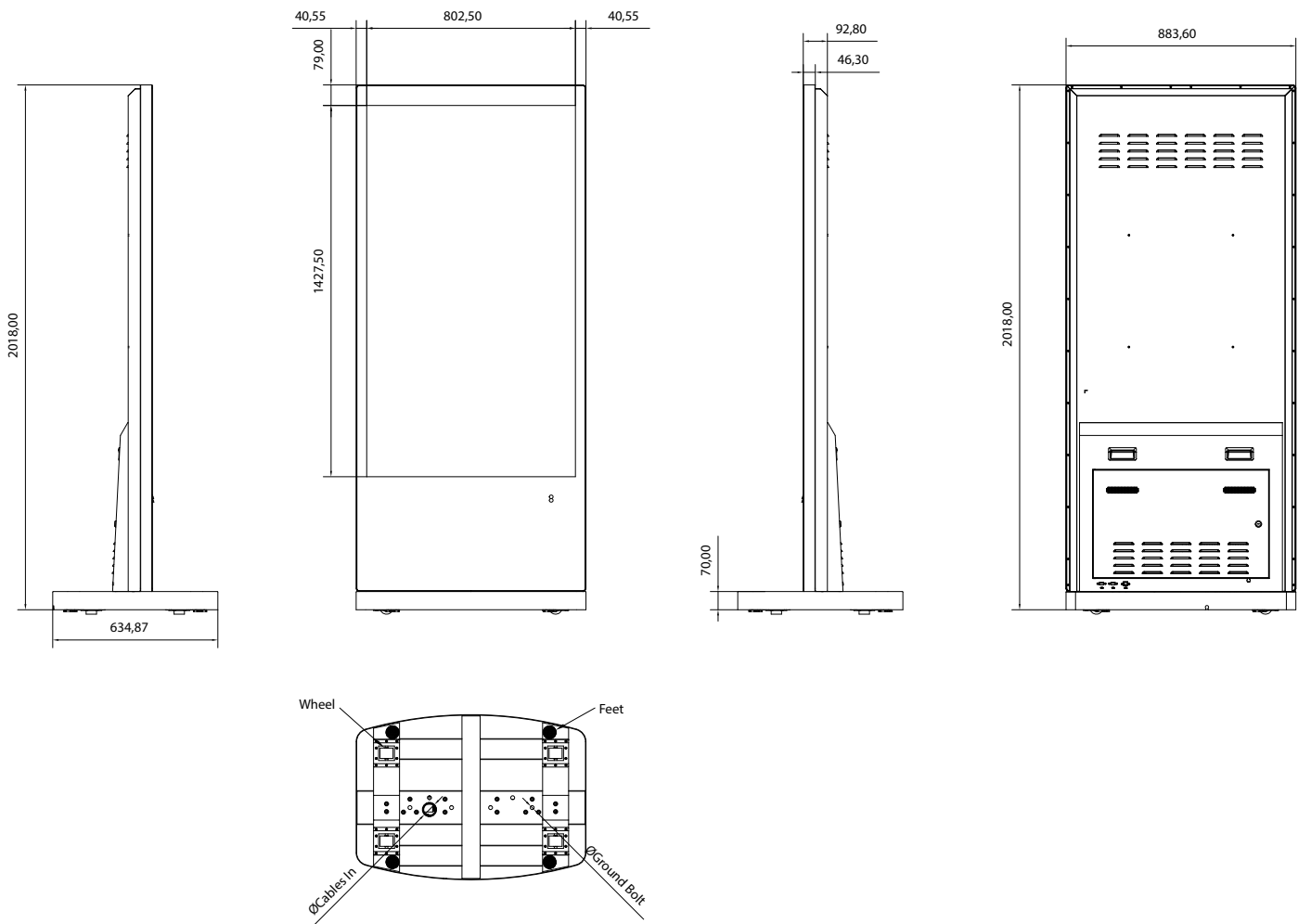


Specification Table

		65 inch
Panel	Resolution	2160x3840
	Display Area (mm)	802.5x1427.5
	Aspect Ratio	16:9
	Brightness (cd/m²)	450
	Colour	16.7M
	Viewing Angle	178°
	Contrast Ratio	1200:1
Audio	Speaker Type	10W, 4Ω (x2)
AV Inputs	Video	HDMI, VGA
	Audio Input	Audio Socket (3.5mm)
Power	Power Consumption (W)	>295
	Input Voltage	AC110~240V (50Hz~60Hz)
Mechanical	Unit Size (WxHxD mm)	883.6x2018x92.8
	Package Size (WxHxD mm)	990x2170x790
	Footprint (WxD)	634.87x883.6
	Net Weight (kg)	92
	Gross Weight (kg)	102
Environmental	Operating Temperature	0 °C to 40 °C
	Storage Temperature	-10°C to 55°C
	Operating Humidity	10% to 80%
	Storage Humidity	10% to 80%
Computer	Media Formats	Video (MPEG1/MPEG2/MPEG4/H.264/WMV/MKV/TS/FLV), Audio (MP3, ACC), Image (JPG/JPEG/BMP/PNG)
	Media Resolution	3840x2160
	CPU	RK3399 Hexa-Core 1.8GHz
	RAM	4GB DDR3
	Architecture	64-bit
	Graphic Engine	ARM Mali-T864 Quad-Core
	Hard Drive/Internal Memory (eMMC)	32GB eMMC FLASH
	USB	USB 3.0 x 2, USB 2.0 x3
	LAN	100/1000 Ethernet
	Wi-Fi	802.11b/g/n/ac; 2.4G and 5G
	OS	Android 7.1
Accessories	Included	Remote Control, User Manual, Power Cable, USB to USB Cable, Wi-Fi Aerial
Warranty	Warranty Period	3 Year Warranty
	Technical Support	Lifetime

Errors and omissions excepted



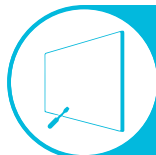


Why Choose Our Commercial Display Solutions?



Lifetime Technical Support

From the moment you receive your product, throughout the duration of your warranty and even after your warranty has expired we are here to support you. If you require any assistance setting up or using your product, or have any problems at all, we can provide free technical support via telephone and email.



On-site Support and Maintenance*

If needed, we can provide an installation service for any of our products. We can also set up service-level agreements for larger projects that require maintenance contracts.



Extended Warranty*

All of our commercial display products come with a 3 year commercial warranty as standard but if you want to extend this you can upgrade this to cover a 5 year period at point of purchase.



Training

As well as providing free remote CMS training sessions and webinars we can also visit you to deliver bespoke training for our software and hardware*.



Advanced Replacements†

Should your display suffer from any kind of hardware failure during the warranty period we will send you an advanced replacement and arrange for your old display to be collected, free of charge. This ensures no downtime where you are without a screen.



Custom Product Testing & Configuration

If you need us to test third party software or a website, or configure your screen in a particular way before it is dispatched (e.g. in a particular orientation or network mode), we can do so to make your life easier.



3D Rendering

Want to know how a particular screen will look once installed? Send us a photo of the location and we will create a 3D rendering of any screen in situ to help you to visualise how amazing it will look.



Logistics Support

We hold more stock in our UK warehouse than any other manufacturer so we can help you meet tight deadlines. For last minute orders we can also offer special express or morning delivery options*. We also carry out UK based quality control checks on every display before it leaves our warehouse.



Project Support

If you need to loan a sample unit to test we'd be more than happy to arrange this. We can also provide a rental service for temporary projects*.



Customisation*

Your display can be customised to suit your requirements by adding your logo or printed graphics or even tailoring the colour of a display. We can also carry out hardware modifications to existing products or manufacture bespoke solutions for special projects.



Extras*

As well as being able to provide accessories and add-ons, such as extra remote controls, NUC PCs and video wall controllers, we can also supply custom made flight cases which are great if a display needs to be moved safely from place to place.



†UK mainland only

*These particular services may incur additional charges