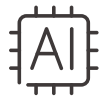


# Pan/Tilt AI Home Security Wi-Fi Camera

**3K  
5MP**

**Tapo C230**



## Human/Pet/Vehicle Detection

Baby Crying  
Detection

Motion Detection  
and Tracking

Night Vision up to  
40 ft

works with  
**alexa**

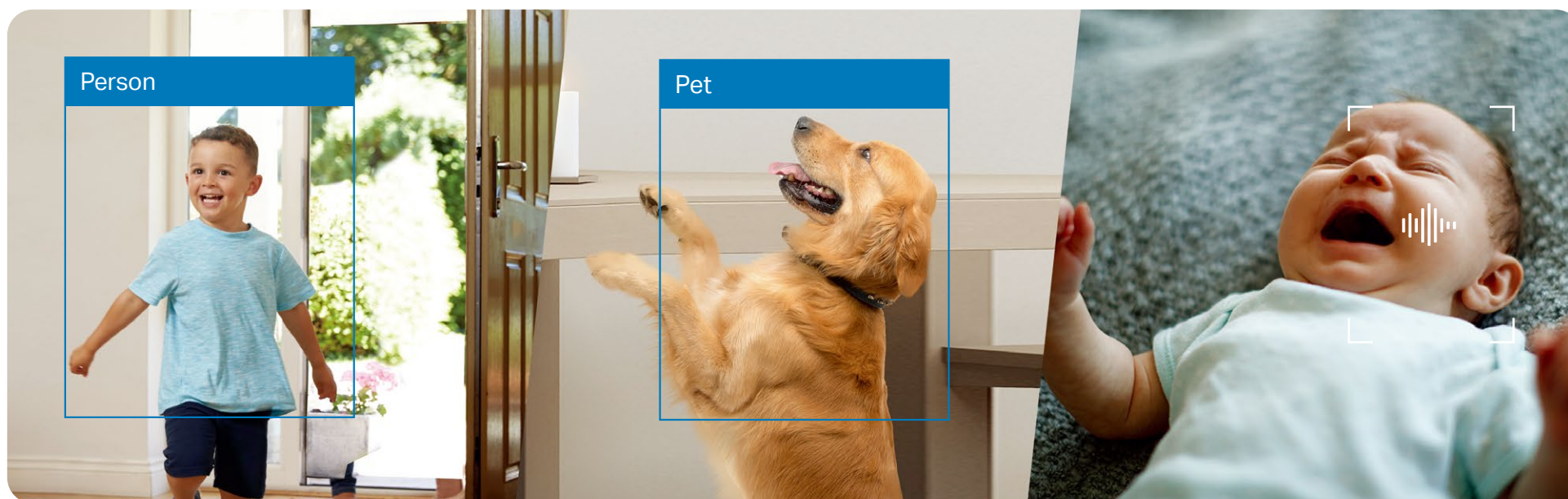
works with  
**Google Home**



## // Highlight

### Smart AI Detection and Notification

Smart AI identifies people, pets, and vehicles while also recognizing abnormal sounds, notifying you as needed.



## // Features



### Motion Detection and Tracking

Whenever a camera detects motion, it will automatically follow the subject.



### 3K 5MP

Now with 2.25 times more pixels than 1080p, providing clearer videos and photos.



### Local microSD Storage<sup>†</sup>

Store up to 512 GB of video on a microSD card.



### Cloud Storage Supported<sup>‡</sup>

Store videos by using cloud storage services.



### Two-Way Audio

Communicate in real time through a built-in microphone and speaker.



### Customizable Block Zones

Set customizable block zones to keep private areas from being monitored.



### Night Vision up to 40 ft

Provides a visual distance of up to 40 ft in total darkness.



### Field of View

360° horizontal range.



### Activity Zones

Set up your own activity zones to only receive alerts that matter.

<sup>†</sup>microSD card needs to be purchased separately. Actual storage capacity depends on the size of the microSD card used.

<sup>‡</sup>Subscribe for cloud storage at <https://www.tapo.com/tapocare/>

<sup>§</sup>Tapo C230 does not have an Ethernet port and can only be connected via Wi-Fi.

<sup>¶</sup>Compatible with Alexa and Google Assistant supported displays. User experience is dependent on the connected device's specifications.

Specifications are subject to change without notice. All brands and product names are trademarks or registered trademarks of their respective holders.

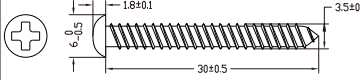
©2024 TP-Link

## // Specifications

<b>Camera</b>	Image Sensor	1/2.7" Progressive Scan CMOS Starlight Sensor
	Lens	Focal Length: 4 mm Aperture: F2.0 Field of View: 102° (Diagonal), 86° (Horizontal), 46° (Vertical)
	Night Vision	850 nm IR LED (40 ft / 12 m)
	Day/Night Switch	IR-Cut Filter with Auto-Switching
	Lighting	/
	Interface & Button	1× RESET Button 1× microSD Card Slot (Up to 512 GB)
	Hub Compatibility	/
<b>Video &amp; Audio</b>	Maximum Resolution	2880 × 1620 px
	Frame Rate	15/20/25/30 fps (Default 15 fps)
	Digital Zoom	/
	Video Compression	H.264
	Live View	Yes
	Image Enhancement	3DNR WDR

<b>Video &amp; Audio</b>	Audio Input & Output	Built-in Microphone and Speaker
	Audio Communication	Two-Way Audio with Noise Cancellation
	Siren Volume	99 dB (Level measured at 4-inch/10-cm distance)
<b>Storage</b>	Local Storage	microSD Card Slot on Camera (Up to 512 GB)
	Cloud Storage	Tapo Care Cloud Storage Services (Subscription required)
<b>Detection &amp; Notification</b>	Sensor	/
	AI Detection	Motion Detection Person Detection Pet Detection Vehicle Detection Line-Crossing Detection Camera Tampering Baby Crying Detection Cat Meows Detection Dog Barks Detection Glass Break Detection
	Activity Zones	Yes *Only works with Motion Detection.
	Output Notification	System Notification System Notification with Snapshot (Tapo Care Services)
<b>Network</b>	Network Connectivity	Connect via Wi-Fi
	Wireless Connectivity	IEEE 802.11b/g/n, 2.4 GHz Wi-Fi

<b>Network</b>	Transmission Rate	11b: 11 Mbps 11g: 54 Mbps 11n: 72.2 Mbps
	Protocol	TCP/IP, DHCP, ICMP, DNS, NTP, HTTPS, TCP, UDP
	Max. Distance Between Hub and Camera/Doorbell	/
	Ethernet Port	/
	RTSP	Yes
	ONVIF	Yes
<b>Security</b>	Security	On-Device Machine Learning 128-bit AES Encryption with SSL/TLS WPA/WPA2-PSK
<b>Power</b>	Power Source	9V DC Power Adapter
	Input Voltage	100-240 V, 50/60 Hz
	Output Voltage	9 V, 0.6 A (DC Power)
	DC Power Connector Size	Inside Ø: 2.1 mm Outside Ø: 5.5 mm
	Power Cord Length	3 m
	Typical Power Consumption	3 W
	Maximum Power Consumption	5.7 W

General	Smart Integration	Google Assistant, Amazon Alexa
	Weather Resistance	/
	Mounting Options	Tabletop Ceiling-Mounted
	Operating Temperature	0 °C ~ 40 °C (32 °F ~ 104 °F)
	Storage Temperature	-20 °C ~ 60 °C (-4 °F ~ 140 °F)
	Operating Humidity	10%~90% RH, Non-condensing
	Storage Humidity	5%~90% RH, Non-condensing
	Charging Temperature	\
	Mounting Screw Size	
	Dimensions	3.36 × 3.42 × 4.63 in (85.4 × 86.8 × 117.7 mm)
	Weight	6.7 oz / 190 g
	Package Contents	Tapo C230 Camera Power Adapter Quick Start Guide Mounting Anchors Mounting Screws Mounting Template Camera Base