

# Outdoor Pan/Tilt Security Wi-Fi Camera

**SONORA**  
PROFESSIONAL  
SERVICES  
INTÉGRATION  
AUDIOVISUELLE

**3K  
5MP**

**Tapo C530WS**

 **Starlight Color Night Vision**

Person/Pet/  
Vehicle Detection

360° Motion  
Tracking

Local microSD Storage  
(Up to 512 GB)\*



works with 

 works with  
Google Home

## // Highlights

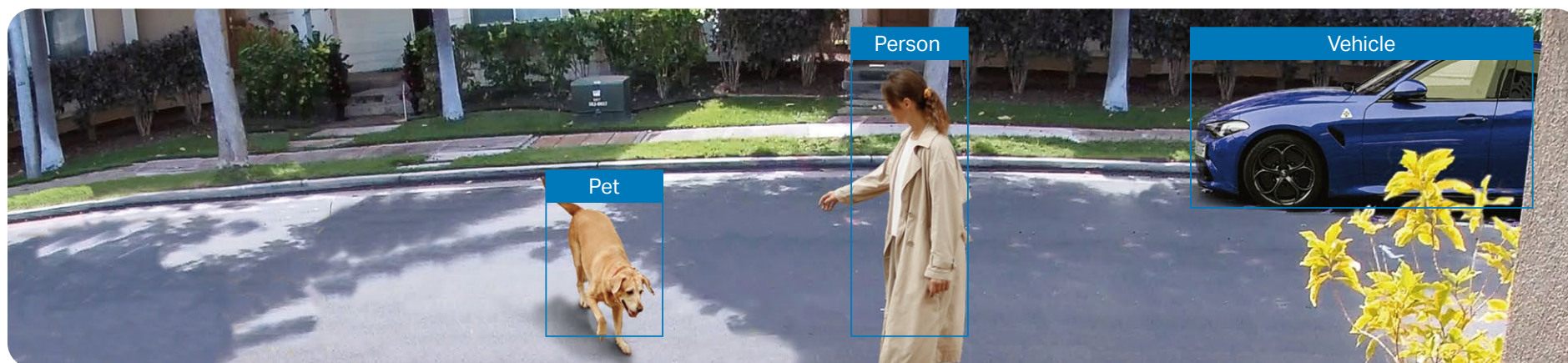
### Build to Withstand Water & Dust

The Tapo camera is protected against jets of water and dust with IP66 weatherproof rating. It works well in rain, snow, dust, and heat.



### Person/Pet/Vehicle Detection and Notification

Smart AI identifies people, pets, and vehicles, notifying users as needed.



## // Features



### 360° Motion Tracking

Provides 360° horizontal & 130° vertical viewing range, enabling you to focus on more vital areas and eliminate blind spots.



### 3K 5MP

Now with 2.25 times more pixels than 1080p, providing clearer videos and photos.



### Local<sup>†</sup> and Cloud<sup>‡</sup> Storage

Save recorded video on a microSD card (up to 512 GB)<sup>†</sup> without monthly fees, or by using Tapo Care<sup>‡</sup> cloud storage services.



### Multiple Installation Options

Use the mounting screws, template and loops<sup>\*</sup> to install on any wall, ceiling or pole for the perfect view.



### Starlight Color Night Vision

Equipped with an F1.6 large-aperture lens and starlight sensor, the camera captures more light and has higher photosensitivity, revealing colorful images even without spotlights on.



### IP66 Weatherproof

Offers excellent waterproof and dustproof performance for outdoor scenarios.



### Customizable Sound and Light Alarm

Records your customized audio as an alarm to extend your usage. Set to trigger a light/sound alarm when detecting activity.



### Wired/Wireless Networking

Connect your camera to the network through WiFi or Ethernet for more flexible installation.

<sup>†</sup>microSD card purchased separately. Actual storage capacity depends on the size of the microSD card used.

<sup>‡</sup>Subscribe for cloud storage at <https://www.tapo.com/tapocare/>

<sup>Δ</sup>Compatible with Alexa and Google Assistant supported displays. User experience is dependent on the connected device's specifications.

<sup>\*</sup>Mounting loops purchased separately.

For more information, please visit <https://www.tapo.com/>

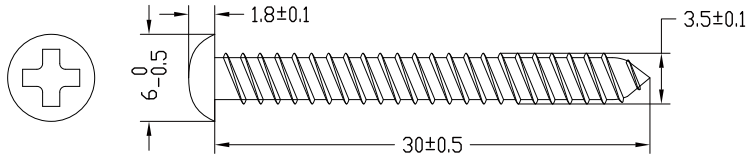
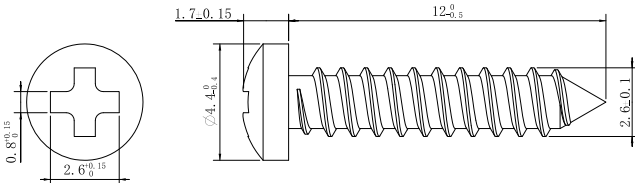
All brands and product names are trademarks or registered trademarks of their respective holders. Specifications are subject to change without notice.

## // Specifications

<b>Camera</b>	Image Sensor	1/2.7" Progressive Scan CMOS Starlight Sensor
	Lens	Focal Length: 4 mm Aperture: F1.6 Field of View: 102° (Diagonal), 87° (Horizontal), 45.5° (Vertical)
	Night Vision	850 nm IR LED (98 ft / 29.87 m) Starlight Color Night Vision
	Day/Night Switch	IR-Cut Filter with Auto-Switching
	Lighting	2× Built-in Spotlights
	Interface & Button	1× Ethernet Port 1× RESET Button 1× microSD Card Slot (Up to 512 GB)
	Hub Compatibility	/
<b>Video &amp; Audio</b>	Maximum Resolution	3K 5MP (2880× 1620 px)
	Frame Rate	15/20/25/30 fps (Default 15fps)
	Digital Zoom	None
	Video Compression	H.264
	Live View	Yes

<b>Video &amp; Audio</b>	Image Enhancement	3DNR WDR
	Audio Input & Output	Built-in Microphone and Speaker
	Audio Communication	Two-Way Audio with Noise Cancellation
	Siren Volume	93 dB (Level measured at 4-inch/10-cm distance)
<b>Storage</b>	Local Storage	microSD Card Slot on Camera (Up to 512 GB)
	Cloud Storage	Tapo Care Cloud Storage Services (Subscription required)
<b>Detection &amp; Notification</b>	Sensor	/
	AI Detection	Motion Detection Person Detection Pet Detection Vehicle Detection Line-Crossing Detection Camera Tampering
	Activity Zones	Yes *Only works with Motion Detection.
	Output Notification	System Notification System Notification with Snapshot (Tapo Care Services)
<b>Network</b>	Network Connectivity	Connect via Wi-Fi or Ethernet
	Wireless Connectivity	IEEE 802.11b/g/n/ax, 2.4 GHz Wi-Fi

<b>Network</b>	Transmission Rate	11b: 11 Mbps 11g: 54 Mbps 11n: 72.2 Mbps 11ax: 143.4 Mbps
	Protocol	TCP/IP, DHCP, ICMP, DNS, NTP, HTTPS, TCP, UDP
	Max. Distance Between Hub and Camera/Doorbell	/
	Ethernet Port	1× 10/100 Mbps RJ45 Port on Camera
	RTSP	Yes
	ONVIF	Yes
<b>Security</b>	Security	On-Device Machine Learning 128-bit AES Encryption with SSL/TLS WPA/WPA2-PSK/WPA3
<b>Power</b>	Power Source	9V DC Power Adapter
	Input Voltage	100-240 V, 50/60 Hz
	Output Voltage	9 V, 0.85 A (DC Power)
	DC Power Connector Size	Inside Ø: 2.1 mm Outside Ø: 5.5 mm
	Power Cord Length	3 m
	Typical Power Consumption	3.9 W
	Maximum Power Consumption	7.41 W

General	Smart Integration	Google Assistant, Amazon Alexa
	Weather Resistance	IP66
	Mounting Options	Ceiling-Mounted Wall-Mounted Pole-Mounted (Pole-Mounting loops required but not included)
	Operating Temperature	-30 °C ~ 60 °C (-22 °F ~ 140 °F)
	Storage Temperature	-40 °C ~ 60 °C (-40 °F ~ 140 °F)
	Operating Humidity	10% ~ 90% RH, Non-condensing
	Storage Humidity	0 ~ 90% RH, Non-condensing
	Charging Temperature	/
	Mounting Screw Size	
	Bracket Screw Size	
	Dimensions	4.8 × 4.8 × 3.5 in (121.7 × 123 × 90 mm)

General	Weight	12.2 oz / 347 g
	Package Contents	Tapo C530WS Camera Power Adapter Mounting Anchors Mounting Screws Bracket Screws Mounting Template Mounting Bracket Waterproof Seal Waterproof Cable Attachments Quick Start Guide

