



MXA925 CEILING ARRAY MICROPHONE

OVERVIEW

The MXA925 sets a new standard for conferencing audio in modern meeting spaces. Built on Shure's proven ceiling array platform, it delivers clear, natural speech capture with AI-enabled IntelliMix® Digital Signal Processing (DSP) onboard. Dual RJ45 networking, enterprise-grade security, and remote management with ShureCloud make the MXA925 an IT-friendly solution for organizations that need reliable, scalable audio capture.

FEATURES

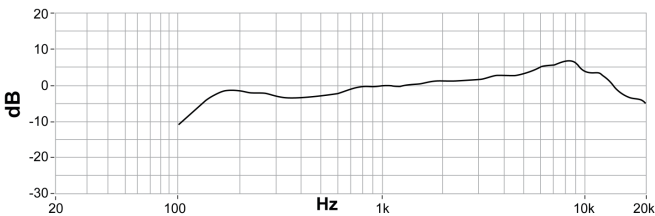
- Automatic Coverage™ provides default 30 ft × 30 ft (9 m × 9 m) pickup out of the box
- Up to eight configurable coverage areas for precise voice capture in complex room layouts
- Supports AV conferencing, camera tracking, and voice lift for versatile applications
- AI-enabled IntelliMix® DSP including AI Acoustic Echo Cancellation (AEC), AI Denoiser, and AI Deverb algorithms.
- Virtual Acoustic Boundary ensures that voices or noises outside of defined automatic coverage areas will not be heard.
- Optimize Tracking feature streamlines setup and greatly improves talker location accuracy when using multiple MXA925 microphones in larger spaces
- Command strings and Device API support integration with third-party cameras and room control systems
- Certified for Microsoft Teams Rooms and Zoom Rooms for seamless platform integration
- Enterprise-grade security with 802.1X authentication, audio encryption, and secure boot
- Dual RJ45 ports enable flexible, redundant, and secure deployments
- Remote monitoring and firmware management via ShureCloud

SPECIFICATIONS

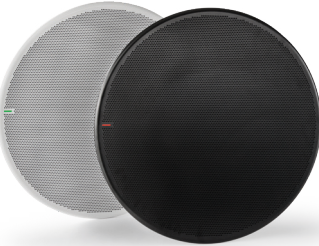
All information and specifications are subject to change.

Connector Type	Dual RJ45 connectors
Power Requirements	Power over Ethernet (PoE), Class 0
Weight	MXA925-S: 11.8 lbs (5.4 kg) MXA925-R: 12.7 lbs (5.8 kg)
Product Dimensions	MXA925-S: 23.77in. (603.8mm) X 23.77in. (603.8mm) x 2.15 in. (54.69 mm) MXA925-S-60CM: 23.38 in. (593.8 mm) x 23.38 in. (593.8 mm) x 2.15 in. (54.69 mm) MXA925-R: 25 in. (635.4 mm) x 2.4 in. (61.3 mm)
Control Software	Web Application or Shure Designer
Cable Requirements	Cat5e or higher (shielded cable recommended)
Operating Temperature Range	-6.7°C (20°F) to 40°C (104°F)
Plenum Rating	MXA925-S UL2043 (Suitable for Air Handling Spaces) MXA925-R Not rated
Dust Protection	IEC 60529 IP5X Dust Protected
Frequency Response	125 Hz to 20 kHz
Polar Pattern	Array
Microphone Elements	113 MEMS
Coverage Type	Automatic Coverage / Steerable Coverage
Coverage Size	30 x 30 feet (9.1 x 9.1 meters)
Latency	Direct outputs (Automatic coverage off) 13 ms Automix output (Includes IntelliMix processing) 47 ms
Dynamic Range	77.5 dB

FREQUENCY RESPONSE



MXA925-60CM
Ceiling Array Microphones
Front



MXA925-R
Ceiling Array Microphones
Front



Dual RJ45 Network Ports

SKUs

MXA925W-S	White square microphone
MXA925W-S-60CM	White square microphone (60 cm)
MXA925B-S	Black square microphone
MXA925B-S-60CM	Black square microphone (60 cm)
MXA925W-R	White round microphone
MXA925B-R	Black round microphone

AVAILABLE PARTS AND ACCESORIES

A900-GM	Gripple Mount Kit
A900-PM	Pole Mount Kit
A910-JB	Junction Box Accessory
A900-CM	On-Ceiling Mount
A910-HCM	Hard Ceiling Mount